



Respect Kindness Confidence Tolerance Self-Discipline

Key Dates

Monday 3rd June

Start of Term 6

Thursday 6th June

Family Science Event—Y3,4,5 2.30pm

Monday 10th—Friday 14th June

Year 1 Phonics Screening Check

Year 4 Multiplication Check

Tuesday 18th June

Reception trip to Rand Farm

Friday 21st June

FoS Disco Y1-6

Monday 24th—Wednesday 26th June

Y6 residential

Tuesday 2nd July

ADHD Lincs Parent Session—2.30pm

Dear St John's Families,

I can't quite believe I am writing at the end of another term. The year really is flying by.

I must start by saying how proud I am of all our Year 6s who conducted themselves absolutely brilliantly during their SATs. They were focused and worked so hard. We had a monitoring visit from the local authority who said that both pupils and staff were 'exemplary.' We can't ask for any more than that!

From the oldest to the very youngest, we were delighted last week to meet our new families of children starting in Reception from September. It was great to let them know what St John's is like and they also got to taste some amazing samples from Good Lookin' Cookin.' We really look forward to welcoming the children and their families into our St John's family.

This week has been Science week at St John's with this year's theme being all about time. We launched Science week with assemblies for all children about time and the children have been engaged in different Science activities linked with this theme all week. Thank you to Miss Opie for leading this!

I hope you all have a wonderful half term break and I'll keep my fingers crossed we get to enjoy some sunshine! We will see you back on Monday 3rd June.

Mrs Emma Jefferson

Headteacher

Contact us:

01522 530954

Email:

enquiries@st-johns.lincs.sch.uk

Website:

<http://www.stjohnsprimaryacademy.co.uk/>



GROWING YOUNG MINDS: A GREAT PLACE
TO ENJOY LEARNING!



Attendance and Safeguarding

**MOMENTS
MATTER,
ATTENDANCE
COUNTS.**



FS RJR	94.9%
FS RAS	89.9%
Y1CT	92.8%
Y1RT	96.1%
Y2ST	96.7%
Y2F	95.4%
Y3B	96.6%
Y3HC	96.7%
Y4O	98.4%
Y4BC	90.8%
Y5M	96.5%
Y5N	88%
Y6B	95.6%
Y6D	95.5%

Attendance for the week:

94.6%

Attendance for the year to date:

95%

NB: A school day is split into 2 sessions—AM and PM

Attendance Updates

We have launched some exciting new attendance initiatives across the school.

Class Challenge

Each week, the class with the highest overall attendance will receive the attendance trophy but the class with the most wins over a big term will receive a special treat. This summer term, we have booked a visit from the ice-cream van. It's a close contest at the moment with RAS just in the lead but there are still plenty of weeks left for this to change!

100 club

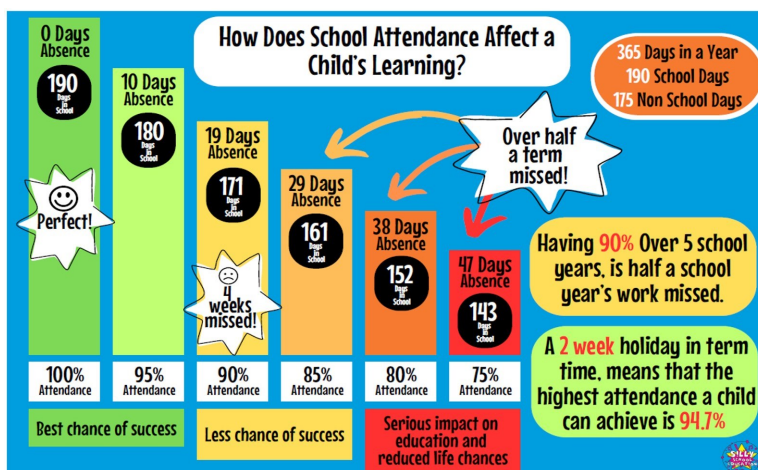
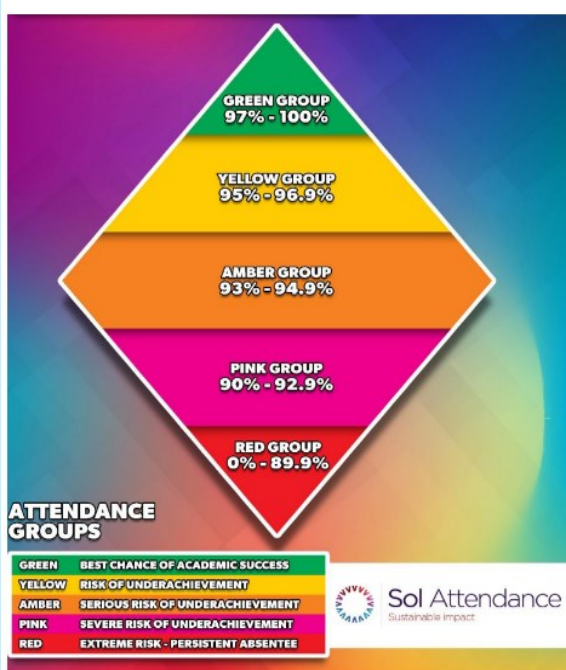
Any child with 100% attendance over a short term (6 weeks) will be put into a draw as part of the 100 club. 3 winners will be chosen at random and will receive a prize. This will then be reset each small term giving many children the opportunity to be part of this club. Children will get the chance to join the club even if they've had days off in previous terms as it's always reset at the start of a new term.

Improved Attendance

We recognise that there are sometimes reasons why children are unable to come to school and we will recognise when a child's attendance may have improved significantly through use of certificates and badges.

Thank you for your continued support in promoting good attendance and working alongside school in partnership to make sure the children are accessing a high quality education.

Attendance Ladder



Curriculum and Learning

EYFS Prince and Princess / Fairytale Day

It was such a treat to visit Reception classes last week and see more princes, princesses and knights than I have ever seen in one place! The children looked wonderful and I did my best curtsy to them all. This was part of their 'once upon a time' topic where the children have been looking at traditional tales and finding lots of different ways to retell a story. Activities included 'Pin the lips on the frog', building castles and making shields. They had a lovely indoor picnic lunch and delicious cupcakes for their snack that afternoon. Thank you to our families for your support with their amazing costumes.



Earth Day

You may have remembered in my last newsletter, we had celebrated Earth Day in school with the focus this year being Planet vs. Plastics. I'm so proud of Sienna and Kaylee for going away and working together on a fantastic poster to highlight this theme. Well done girls!



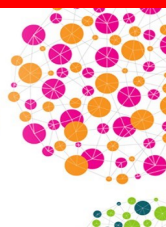
Merit Winners

A huge well done to our recent Merit superstars! We love hearing about your wonderful achievements in school.



Science Week

British
Science
Week
2024



ST JOHN'S
A PRIORY ACADEMY

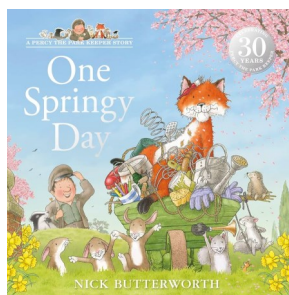
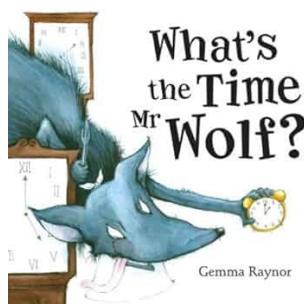
Science Week has landed at St John's this week with the theme this year being 'time.' The children in all classes have been engaged in activities with a time theme. It has soon become apparent that time encompasses Science in many different ways!

Here are a few snapshots of what's been happening in classes this week!

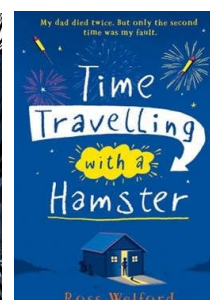
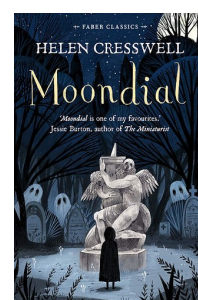


Recommended Reads—Theme of Time!

EYFS / KS1



KS2



Pupil Premium



ST JOHN'S
A PRIORY ACADEMY

We believe there may be some families at St John's who are eligible for Pupil Premium funding but who haven't registered so are not accessing the benefits. You can apply at any time.

PUPIL PREMIUM IS MORE THAN JUST FREE SCHOOL MEALS

If your child is in receipt of pupil premium funding, they can receive:

- Contributions towards the cost of school trips
- Contributions towards the cost of after school clubs.
- Support with purchasing school uniform.
- Free school meals (continuing after Year 2)

Do you receive any of the following?

- Income support
- Employment Support Allowance (Income Related)
- Income based Job Seekers Allowance
- Guaranteed Pension Credit
- Child Tax Credit and your income (as calculated by the Inland Revenue) is less than £16,190
- Universal Credit
- Receiving support under Part VI of the Immigration and Asylum Act of 1999
- In the Armed Forces

If yes, click [here](#) to
apply!

We will receive
extra funding for
every eligible pupil
who is registered!

If you need any support in applying, please come into school and speak to a member of staff in the office who will be more than happy to help you with your application.

We want all children who are entitled to this funding to be receiving it as it makes a huge difference.



In the Community



ST JOHN'S
A PRIORY ACADEMY

The Professor Ananda's Super Story Time



Come and join in with a wonderful story
all about our environment

—"Oi! Get off our train!" by John Burningham.

Fun and interactive.

For all primary school aged children.



The Heath Library
Saturday 8th June
10.30—11am

The Heath Library

The library has another interactive story session coming up which we know our pupils would enjoy! Please remember as well that the library has extended its opening hours on Mondays and Wednesdays until 4.30pm so that children can pop along after school!

Boys Football Team

You will have read in our last newsletter that the girls football team have a sponsor and we're really happy to announce that our boys now have a sponsor too. A huge thank you to Mrs Newman and AquaStars Swim School who will be sponsoring our boys, meaning they can have a new kit for the next season!



Friends of School

The Friends of School will be running an Art competition after half term so please keep a look out for details.

Also, the tea towel project, which we know is always a firm favourite with our families, is underway so please look out for order details after half term. The tea towels are always such a precious keepsake and the school receives funds for each one sold. Thank you to Friends of School for continuing with their fundraising efforts.

FOS

Friends
of
School

St. John's Primary Academy

St John's Church

Please can we ask families to park considerately at St John's Church as we have had reports of parishioners being unable to access the Church or being blocked in.

We appreciate that parking near school is difficult but would encourage families to ensure safety and consideration for others when dropping off or collecting. Thank you so much for your support with this.



St John the Evangelist's, Bracebridge Heath, Lincolnshire, England.